

# The ACT<sup>®</sup> Student Report

N0204001-000015515

STUDENT'S NAME: JURGEN H FAMULA  
HIGH SCHOOL NAME: RAMPART HIGH SCHOOL  
HIGH SCHOOL CODE: 060-294

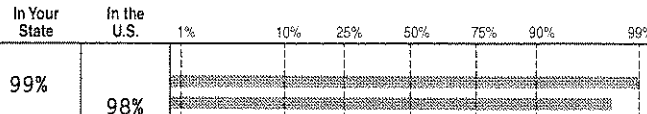
ACT ID: -23978012  
SSN: NOT PROVIDED  
TEST DATE & LOCATION: APR 2011 NATIONAL



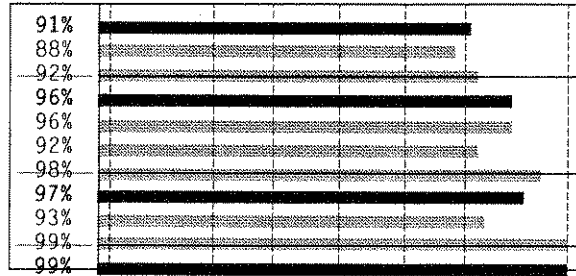
## Your ACT Scores

Rank: Approximate percent of ACT-tested students at or below your score

**Composite Score 32**



<b>ENGLISH</b>	29*
Usage/Mechanics	15
Rhetorical Skills	15
<b>MATHEMATICS</b>	31*
Pre-Algebra/Elem. Algebra	17
Algebra/Coord. Geometry	14
Plane Geometry/Trig.	16
<b>READING</b>	33*
Social Studies/Sciences	16
Arts/Literature	18
<b>SCIENCE</b>	36*



**COMBINED ENGLISH/Writing** --  
Writing (score range 2 to 12) --



The Combined English/Writing score ranges from 1 to 36 and is a combined measure of the Writing and English tests. The Writing score ranges from 2 to 12. Your ranks for these two scores are based on recent ACT-tested students who took the Writing test.

INDIVIDUAL COLLEGES DETERMINE WHETHER THEY RECOMMEND OR REQUIRE WRITING SCORES. YOU CAN CHECK ACT'S WEBSITE WWW.ACTSTUDENT.ORG TO FIND OUT IF ANY COLLEGES YOU ARE INTERESTED IN RECOMMEND OR REQUIRE THE WRITING TEST.

\*Your College Readiness: If your scores are at or above the following ACT benchmark scores, you will likely be ready for first-year college courses—English 18, Mathematics 22, Reading 21, Science 24.

- ACT<sup>®</sup> test scores and the Composite score range from 1 to 36; subscores range from 1 to 18.
- Your Composite score is the average of your scores on the four subject area tests. Subscores do not necessarily add up to your score for a subject area test.
- Your ranks tell you the approximate percentages of recent high school graduates in the U.S. and your state who took the ACT and received scores that are the same as or lower than yours. A rank of 70, for example, means that 70% of students received scores that are the same as or lower than your score.
- Your test scores are only estimates, not precise measures, of your educational development. You will find more information about interpreting your scores in the booklet you received with this report and at [www.actstudent.org](http://www.actstudent.org).



Looking for more information about your individual strengths and test preparation? Go to [www.actstudent.org](http://www.actstudent.org).

## Your College Reports

At your direction, your scores from this test date are being reported to the colleges shown below. College planning information is provided for the first four choices you listed when you registered or tested. (Fifth and sixth choices, if any, appear just above your first choice.) Your GPA was calculated from the grades you reported. To view additional college planning information or to send additional reports, visit [www.actstudent.org](http://www.actstudent.org).

College Name and Code	What is the profile of enrolled 1st-year students at this college?			Is the program of study you prefer offered?	What are the approximate annual tuition and fees?		What percent of 1st-year students receive financial aid based on:	
	High School Class Rank	ACT Composite Score	High School Grade Point Average		In-state	Out-of-state	Need?	Merit?
YOU DID NOT PROVIDE CODES FOR ANY COLLEGES TO WHICH TO REPORT SCORES.								

## Your Information

Your Class Rank: TOP 50%  
Your Composite Score: 32  
Your Calculated GPA: --  
Your Selected Major: CHEMISTRY

Check with colleges for recent changes in information.

A dash (—) indicates information was not provided or could not be calculated.

\*Comprehensive fee including room and board.

© 2008 by ACT, Inc. All rights reserved.